



H&M

**Kayla Daurio
Esther Fomin**

Prof Alonso | FASM 310





Table of Contents

1. Company Overview
2. Target Customer
3. Company Status
4. Unique Selling Position
5. Size and Scope
6. Competitors
7. SWOT Analysis
8. Trend Research
9. Color Story
10. Fabrics
11. Collection Lineup
12. Manufacturer
13. Unit Assortment Plan
14. Time & Action Calendar
15. Mockups
16. Launch Event
17. Promo Video
18. Tech Packs & Cost Sheets
19. Appendix

Company Overview

With a full line of casual yet chic separates and outfits, Divided by H&M covers all of your fashion bases.

H&M Group is a family of brands and businesses, making it possible for customers around the world to express themselves through fashion and design

Growth- H&M Group is expanding, with a focus on omnichannel sales. We make it possible for our customers to shop and be inspired when and how they choose – in our stores, on our brands' own websites, on digital marketplaces and in social media.



Target Customer

Name: Jenny Loy

Age: 20

Gender: Cis Female

Location: NY,NY

Education- Studying Fashion merchandising at FIT

Marital Status- Single

Career: Receptionist for Wholesale fashion company

Income: 39k

Lifestyle: Works 9-5pm 5 days a week. Enjoys a glass of wine at night and going out to local bars on the weekend

Values: Human connection, affordable fashion, good night's sleep, family vacations, smart/ good eating.



Company Status

With employee count of more than 161000 worldwide the brand has been reaching to the major economies globally.

H & M has been ranked 36th in [Forbes](#) magazine list of World's Most Powerful Brands. The Apparel/ footwear Retail Brand has been valued at \$ 39.9 billion (market capitalization value method) generating revenue of \$ 22.67 billion.

H&M Group's ten largest markets, third quarter 2021

Markets*	Stores (30 Sept 2021)
Germany	444
USA	549
UK	272
France	219
Sweden	155
Russia	161
Italy	170
Netherlands	122
Poland	191
Spain	154
Franchise	268
Others*	2,419
Total number of stores:	4,856

Unique Selling Position

- Divided has provided their consumer with collabs from TV shows, celebrities and more. The collabs stay in line with H&M's fashionable, on trend, and affordable clothing.
- Divided brand has been known for their neutral color pallet on fashionable articles. Our launch brings muted and pastel colors to new on trend pieces. AW deserves some color too.
- Taking design hints and aspects from Ganni, Divided Freshr is offering a sustainable option to our favorite retailer.

Size and Scope

Product line

Womens
apparel

Price

\$30-\$45
\$50-\$60
(denim + jackets)

Sizes

xs-xl

Product line

Petite
Plus size
Target

Company Size

Over 5,000
stores worldwide
and employs
over 120,000
people.

Type

Public
HNNMY
3.82 USD

Competitors

Zara

\$5.90- \$600

The company specializes in fast fashion, and products include clothing, accessories, shoes, swimwear, beauty, and perfumes. It is the largest company in the Inditex group, the world's largest apparel retailer.

ASOS

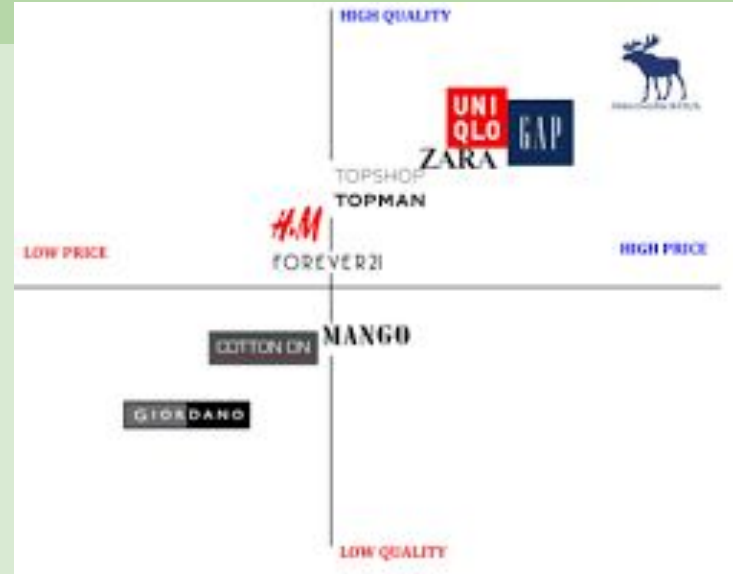
\$4-\$885

ASOS plc is a British online fashion and cosmetic retailer. Primarily aimed at young adults. Sells over 850 brands as well as its own range of clothing and accessories, and ships to all 196 countries from fulfilment centres in the UK, USA and Europe.

Forever 21

\$2.99-\$79.99

authority on fashion & the go-to retailer for the latest trends, styles & the hottest deals.



Swot Analysis

Strengths

- Affordable Trendy clothing**-H&M uses the fast fashion model that supplies designer tables with the latest fashion trends.
- **New focus on sustainability**- the company's global operation reduces risk and enhances [sustainability](#) and stability.
- Global Presence**-From Europe to North America, Asia, Australia, Africa, and Latin America,
- Strong online presence**-H&M has a strong online presence with a large audience across numerous platforms, which is funneled to drive sales via eCommerce

Opportunities

- Emerging market focus**-From Asia to Africa, the growing middle-class in emerging markets presents fashion retailers like H&M with the greatest potential for growth.
- Diversify products**- Retailers offering a wide variety of products are stable and earn more. Improve its bottom-line by diversifying offerings to include sports apparel.
- Expand through Acquisition and Mergers**- H&M can expand into related markets like secondhand clothes through acquisition or merger with a player in the market.

Weaknesses

- Fast fashion**
- Over dependence and outsourcing**-Instead of manufacturing in-house, H&M outsources most of its production to over 900 independent suppliers in Europe and Asia.

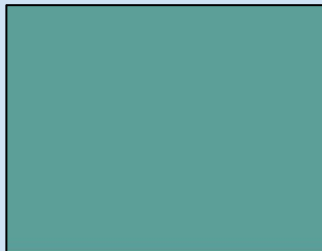
Threats

- Large competition**
- Operation costs**- Globally, profits for retailers are decreasing gradually with an increase in the cost of labor and raw materials
- **Increase in Counterfeits**-With the ever-increasing trade in fake products globally, profits from H&M's premium designer brands can decrease in the future.
- Trade Tariffs**- H&M outsources a large portion of its production from Asia, which makes a perfect target for tariffs.



Trend Research

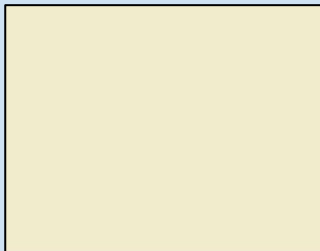




PANTONE
16-5412 TCX
Agate Green



PANTONE
13-6008 TCX
Misty Jade



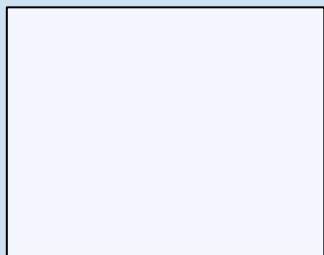
PANTONE
11-0609 TCX
Ethereal Green



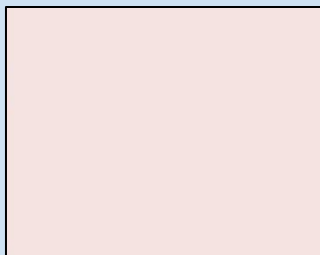
PANTONE
16-3310 TCX
Lavender Herb



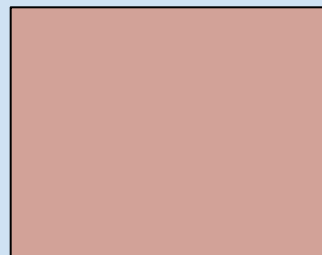
PANTONE
16-3923 TCX
Baby Lavender



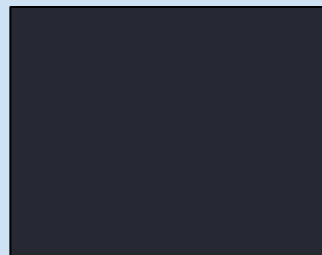
PANTONE
11-0700 TCX
Lucent White



PANTONE
11-2409 TCX
Delicacy



PANTONE
15-1516 TCX
Peach Beige



PANTONE
19-3922 TCX
Sky Captain



Cotton Ribbed Knit
87% Cotton, 10% Rayon, 3% Spandex



- **Jersey Knit**
- 100% Polyester



Polyester Interlock
- 100% Polyester



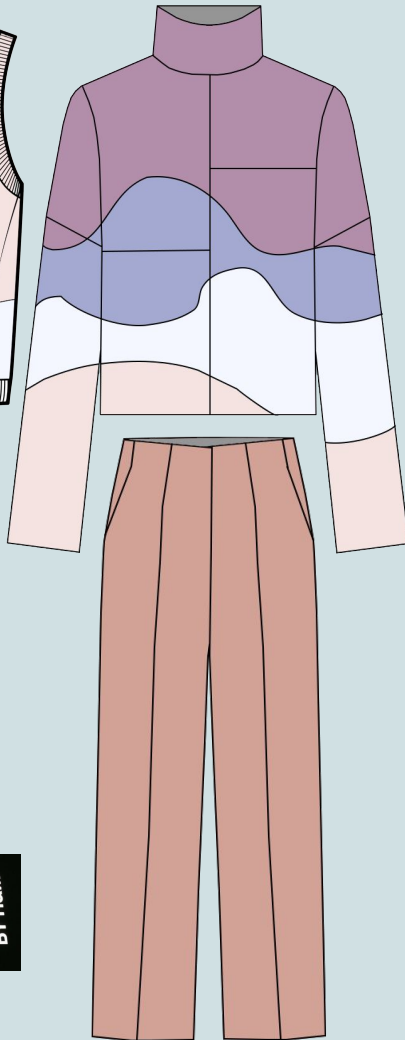
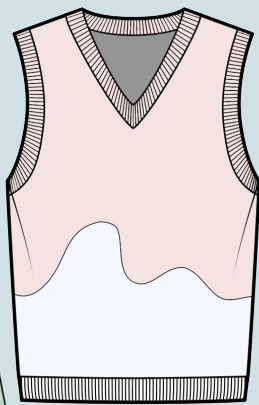
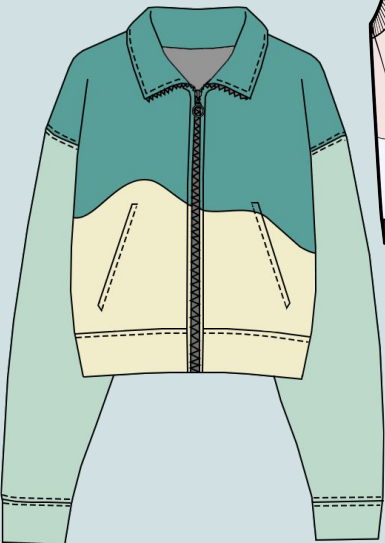
Polyester Mesh
- 92% Polyester, 8% Spandex



Polyester Ribbed Knit
87% Polyester, 10% Rayon, 3% Spandex



- **Denim**
-100% Cotton



GANNI
DIVIDED BY H&M

Freshr

Lineup

Manufacturer

Apm Global Logistics

Target Group: Apparel

Country of Origin: Bangladesh



Unit Assortment Plan

STYLE #	NAME	Quantity	August Quantities	September Quantities	October Quantities	November Quantities	December Quantities	January Quantities	SP Total Quantities	TOTAL
Style #1003425	Jacket	20,000	2200	3200	4000	4200	3800	2600	20000	20000
Style #1303426	Sweater Vest	20,000	2500	3000	4000	4300	3500	2700	20000	20000
Style #1400007	Mesh Turtleneck	20,000	3800	2200	2800	4500	2700	4000	20000	20000
Style #150042	Dress Pants	20,000	2200	3200	4200	4500	3400	2500	20000	20000
Style #160029	Chunky Turtleneck Sweater	20,000	2100	2800	4300	4500	4000	2300	20000	20000
Style #10030	Jeans	20,000	2300	3000	4000	4500	3800	2400	20000	20000
Style #100418	Denim Dress	20,000	4000	4500	2500	1800	3000	4200	20000	20000
	TOTAL		19100	20700	21900	24200	25800	20700	140000	140000

Cost PER UNIT	COST TOTAL	RETAIL PER UNIT	RETAIL TOTAL	Margin \$	Margin % %
\$18.44	\$368,800.00	\$59.99	\$1,199,800.00	\$831,000.00	69.26%
\$15.61	\$312,200.00	\$49.99	\$999,800.00	\$687,600.00	68.77%
\$7.68	\$153,600.00	\$24.99	\$499,800.00	\$346,200.00	69.27%
\$9.75	\$195,000.00	\$34.99	\$699,800.00	\$504,800.00	72.13%
\$9.21	\$184,200.00	\$29.99	\$599,800.00	\$415,600.00	69.29%
\$9.15	\$183,000.00	\$29.99	\$599,800.00	\$416,800.00	69.49%
\$17.15	\$343,000.00	\$54.99	\$1,099,800.00	\$756,800.00	68.81%
\$86.99	\$1,739,800.00	\$284.93	\$5,698,600.00	\$3,958,800.00	69.47%

Time & Action Calendar

ACCOUNT MANAGER- KAYLA DAURIO. ESTHER FOMIN
DESTINATION PORT- SAVANNAH, GA
VENDOR-APM GLOBAL LOGISTICS
ORIGIN- BANGLADESH

DESIGN RESEARCH- **10/6**

DESIGN DEVELOPMENT- **10/15**

ORDER CONFIRMATION/PRODUCTION RESERVATION -**11/20**

COMPLETE COLOR/PATTERNS BREAKDOWN DUE -**11/29**

1ST LABDIP/STRIKE OFF SUBMISSION FROM VENDOR-**12/2**

1ST LABDIP/STRIKE OFF COMMENTS FROM BUYER -**12/12**

2ND LABDIP/STRIKE OFF SUBMISSION FROM VENDOR -**12/28**

2ND LABDIP/STRIKE OFF COMMENTS FROM BUYER -**1/2**

3RD LABDIP/STRIKE OFF SUBMISSION FROM VENDOR -**1/7**

3RD LABDIP/STRIKE OFF COMMENTS FROM BUYER -**1/27**

FINAL LABDIP/STRIKE OFF APPROVAL DUE -**2/5**

1ST FIT SAMPLE SUBMIT -**2/26**

1ST FIT SAMPLE COMMENTS DYE -**3/3**

2ND FIT SAMPLE SUBMIT -**3/14**

2ND FIT SAMPLE COMMENTS DUE -**3/20**

FIT APPROVAL DUE -**5/4**LATEST

TRIMS/ACCESSORIES APPROVAL -**4/21**

PIECE GOODS KNITTING/WEAVING -**3/2**

PIECE GOODS DYEING (SOLIDS) -**3/15**

ULK FABRIC SUBMIT FOR APPROVAL- **3/20**

AD SAMPLES SUBMIT -**4/15**

FABRIC EX MILL – **4/18**

FABRIC IN FACTORY(PRODUCTION COO) -**5/18**

ACTIONABLE PREPRO SUBMIT -**5/20**

PRODUCTION CUTTING -**6/5**

PRODUCTION SEWING COMMENCE -**6/10**

TOP SAMPLE SUBMIT – **6/15**

SHIPMENT AT CONSOLIDATOR - **8/28**

IN STORES – **9/1**



Mockups

Packaging



Store Front



Social Media



 hm  · [Follow](#) ...

 Freshr! Welcome a breath of fresh air into your wardrobe! Visit us to see our new styles and breathe easy.

2d

 [valerialipovetsky](#)   ♡

2d 11 likes Reply

 [_o_noemi_newt._o_](#) Super  ♡


2d 332 likes Reply

— Hide replies

 [_i_am_fa_92](#) Ist leider dauer ausverkauft ♡

2d 4 likes Reply

— View replies (2)

   🔖

28,068 likes

2 DAYS AGO

 Add a comment... Post

Website

Customer Service Student Discount Find a store ☰

H&M


Sign in Favorites Shopping bag(0)

Women Divided Men Baby Kids H&M HOME Sale Sustainability

Search products

Freshr

Welcome a breath of fresh air into your wardrobe! Visit us to see our new styles and breathe easy.



DIVIDED BY H&M
Freshr

DIVIDED BY H&M
Freshr

Print Ad

DIVIDED BY H&M

Freshr

**Welcome a
breath of fresh
air into your
wardrobe!**



@hm
<https://www2.hm.com/>
Or visit us in store

H&M

Launch Event

Where: H&M stores in city regions (NYC, Chicago, LA, Atlanta, Huston, Nashville, Jacksonville, Dallas, New Orleans, Portland)

What:

- Customers will receive 10% off their next purchase if they purchase a piece from the Freshr collection.
- Live in store DJ- \$350x 11 locations= \$3850
- Photo Booth-\$600x 11 location= \$6600
- Branded snacks-\$4,000
- Loyalty program sign up
- 4 Hours, 11 locations =\$14,450

How:

- Social media advertisement for the event
- Window displays in selected location 1 week before event





Promo Video



Tech Packs & Cost Sheets

FALL WINTER 2022



Jacket



Page Index

- Summary P.1
- Sketches P.2 - P.3
- Materials P.4 - P.11
- Sizes P.12 - P.14

Members

- Owner Esther Fomin

Style Info

Shorter jacket in cotton knit fleece. Zipper at front with fashion pull. Hidden kangaroo pockets. Collar, dropped shoulders, long sleeves, cuffs, hem.

- Units: Inches
- Color Combo: GREEN, PURPLE
- Sample Color: GREEN

Jacket - Purple



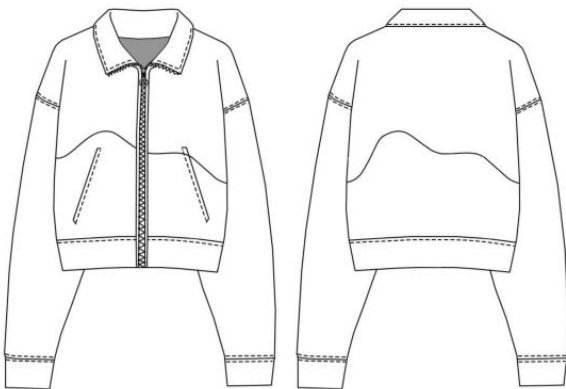
Jacket



FALL WINTER 2022

Sketches

Jacket - BW



Jacket - Green



Product Development Cost Sheet

Date:	11/8/21	Fabric Type:	100% Polyester
Style:	#1003425	Label:	Divided
Description:	Jersey Knit Zip Up Jacket	Country:	Bangladesh

Fabric	Yardage	Indiv. Cost	Cost	
Main		3	\$1.75	\$5.25
Lining				
Total Fabric		3		\$5.25

Trim/Findings	Quantity	Indiv. Cost	Cost
Buttons			
Zipppers	1	0.011	\$0.01
Thread	153	0.00126	\$0.1986
Labels	1	\$0.34	\$0.34
Packing Materials	2	\$0.45	\$0.90
Total Trim			\$1.45

Labor (Country)	Cost per minute	Time	Cost
Labor 1: CMT	0.07	101	\$7.07
Labor 2: Finishing/Digital Print	0.07	1	\$0.07
Total Labor			\$7.14

Total First Cost			\$13.84
-------------------------	--	--	---------

Miscellaneous	Rate	Cost
Agents Commission %	5%	\$0.69
Duty %	27.30%	\$3.78
Shipping	2550.00	\$0.13
Total Miscellaneous		\$4.60

Total Landed Cost			\$18.44
--------------------------	--	--	---------

Wholesale	MU%	Cost	
Wholesale Markup %			
Retail	MU%	MSRP	
Retail Markup %		32%	\$57.62

Retail Selling Price			\$59.99
-----------------------------	--	--	---------





Page Index

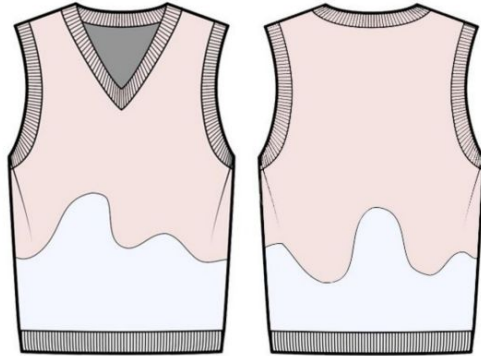
- Summary P.1
- Sketches P.2 - P.4
- Materials P.5 - P.16
- Sizes P.17 - P.19

Members

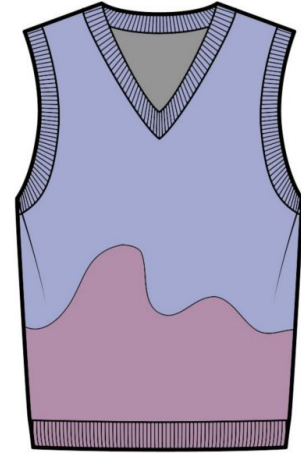
- Owner Esther Fomin

Style Info

- Ribbed stretch fleece sweater vest with a v-neck. Ribbing at neckline, armholes, and hem.
- Units: Inches
- Color Combo: PINK, BLACK, GREEN, PURPLE
- Sample Color: PINK



Sweater Vest - Purple



Vest



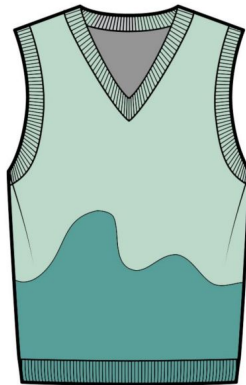
Sketches

Sketches

Sweater Vest - Black

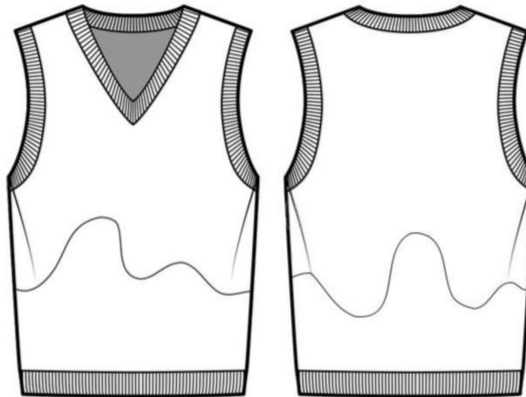


Sweater Vest - Green

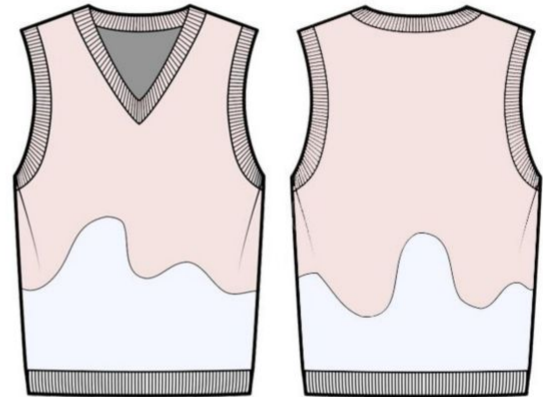


Ves

Sweater Vest - BW



Sweater Vest - Pink



Product Development Cost Sheet

Date:	11/8/21	Fabric Type:	87% Polyester, 10% Rayon, 3% Spandex
Style:	#1303426	Label:	Divided
Description:	Polyester Ribbed Knit Vest	Country:	Bangladesh

Fabric	Yardage	Indiv. Cost	Cost
Main	1	\$1.99	\$1.99
Lining			
Total Fabric	1		\$1.99

Trim/Findings	Quantity	Indiv. Cost	Cost
Ribbing	3	\$2.98	\$8.94
Zippers			
Thread	52	0.00126	\$0.0675
Labels	1	\$0.34	\$0.34
Packing Materials	2	\$0.45	\$0.90
Total Trim			\$10.25

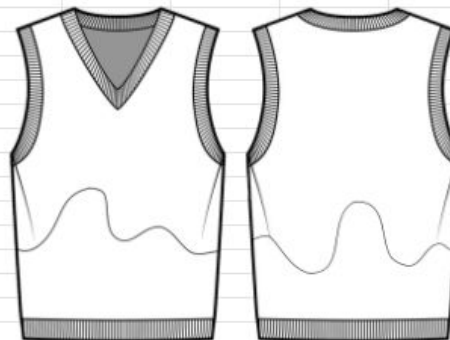
Labor (Country)	Cost per minute	Time	Cost
Labor 1: CMT	0.07	7	\$0.49
Labor 2: Finishing/Digital Print	0.07	1	\$0.07
Total Labor			\$0.56

Total First Cost			\$12.80
-------------------------	--	--	----------------

Miscellaneous	Rate	Cost
Agents Commission %	5%	\$0.64
Duty %	16.00%	\$2.05
Shipping	2550.00	\$0.13
Total Miscellaneous		\$2.81

Total Landed Cost			\$15.61
--------------------------	--	--	----------------

Wholesale	MU%	Cost
Wholesale Markup %		
Retail	MU%	MSRP
Retail Markup %	32%	\$48.79
Retail Selling Price		\$49.99



Mesh Top



Page Index

- Summary	P.1
- Sketches	P.2 - P.3
- Materials	P.4 - P.11
- Sizes	P.12 - P.14

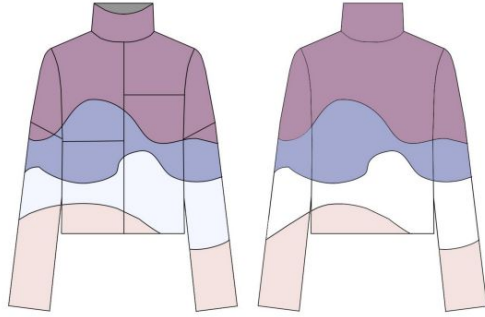
Members

- Owner Esther Fomin

Style Info

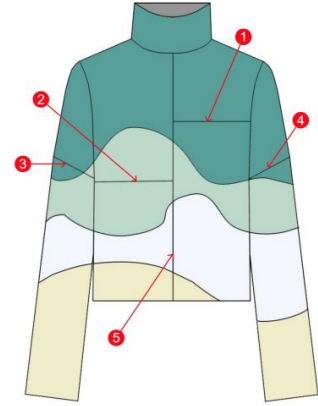
Short, printed mesh top. Turtleneck and long sleeves and rolled hem.

- Units: Inches
- Color Combo: PURPLE, GREEN
- Sample Color: PURPLE



Mesh Top - Green - Front

- 1 Top Left Seam Detail
- 2 Right Bodice Seam Detail
- 3 Right Sleeve Seam Detail
- 4 Left Sleeve Seam Detail
- 5 Center Front Seam Detail

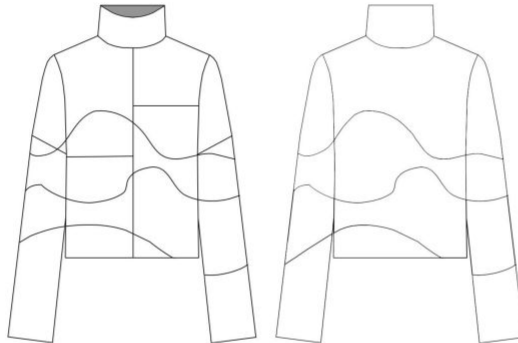


Mesh Top

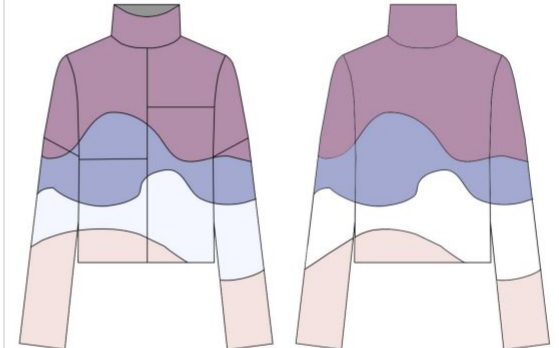


Sketches

Mesh Top - BW



Mesh Top - Purple



Product Development Cost Sheet

Date: 11/8/21 Fabric Type: 92% Polyester, 8% Spandex
 Style: Mesh Top Label: Divided
 Description: Cropped Long Sleeve Turtleneck

Fabric	Yardage	Indiv. Cost	Cost
Main	1	\$3.30	\$3.30
Lining			
Total Fabric	1		\$3.30

Trim/Findings	Quantity	Indiv. Cost	Cost
Buttons			
Zippers			
Thread	122	0.00126	\$0.1583
Labels	1	\$0.34	\$0.34
Packing Materials	2	\$0.45	\$0.90
Total Trim			\$1.40

Labor (Country)	Cost per minute	Time	Cost
Labor 1: CMT	0.07	21	\$1.47
Labor 2: Finishing/Digital Print	0.07	1	\$0.07
Total Labor			\$1.54

Total First Cost **\$6.24**

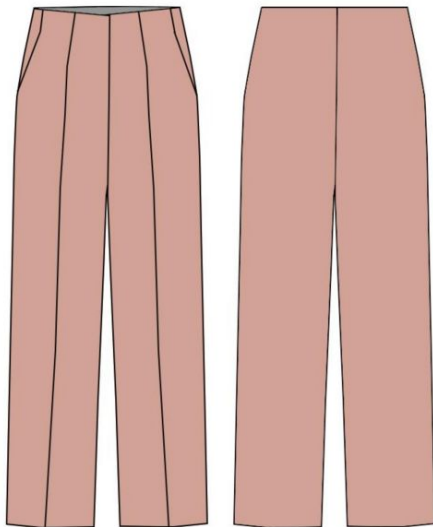
Miscellaneous	Rate	Cost
Agents Commission %	5%	\$0.31
Duty %	16.00%	\$1.00
Shipping	2550.00	\$0.13
Total Miscellaneous		\$1.44

Total Landed Cost **\$7.68**

Wholesale	MU%	Cost
Wholesale Markup %		
Retail	MU%	MSRP
Retail Markup %		32% \$23.99

Retail Selling Price **\$24.99**





Page Index

- Summary P.1
- Sketches P.2 - P.3
- Materials P.4 - P.10
- Sizes P.11 - P.13

Members

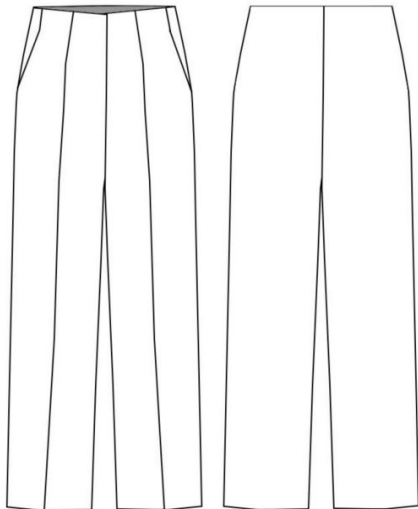
- Owner Esther Fomin

Style Info

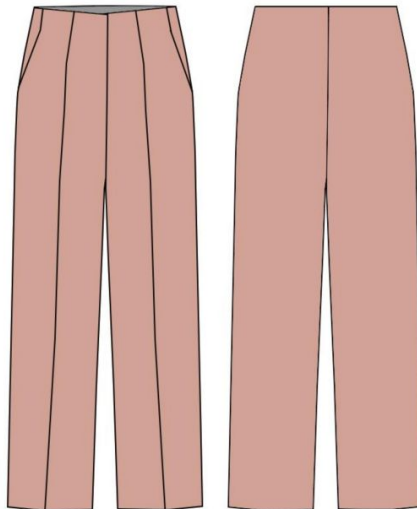
Fitted, high waist with hidden zip fly and clasp. Side pockets, and straight legs with seam detail. Polyester content is recycled.

- Units: Inches
- Color Combo: BEIGE, BLACK, PURPLE, GREEN
- Sample Color: BEIGE

Dress Pants - BW

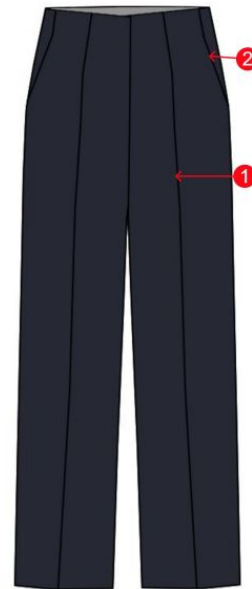


Dress Pants - Beige



Dress Pants - Black

- 1 Seam Detail
- 2 Pocket



Product Development Cost Sheet

Date:	11/8/21	Fabric Type:	100% Polyester
Style:	#150042	Label:	Divided
Description:	Dress Pants W/ Pockets	Country:	Bangladesh

Fabric	Yardage	Indiv. Cost	Cost
Main		2	\$1.99
Lining			
Total Fabric		2	\$3.98

Trim/Findings	Quantity	Indiv. Cost	Cost
Buttons/Closures		1	\$0.50
Zippers		1	0.011
Thread		162	0.00126
Labels		1	\$0.34
Packing Materials		2	\$0.45
Total Trim			\$1.96

Labor (Country)	Cost per minute	Time	Cost
Labor 1: CMT		0.07	18
Labor 2: Finishing			0
Total Labor			\$1.26

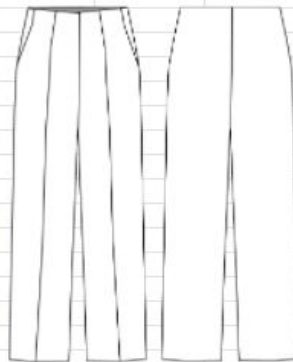
Total First Cost			\$7.20
-------------------------	--	--	---------------

Miscellaneous	Rate	Cost
Agents Commission %	5%	\$0.36
Duty %	28.60%	\$2.06
Shipping	2550.00	\$0.13
Total Miscellaneous		\$2.55

Total Landed Cost			\$9.75
--------------------------	--	--	---------------

Wholesale	MU%	Cost
Wholesale Markup %		
Retail		MSRP
Retail Markup %		32%

Retail Selling Price			\$34.99
-----------------------------	--	--	----------------





Page Index

- Summary P.1
- Sketches P.2 - P.4
- Materials P.5 - P.11
- Sizes P.12 - P.14

Members

- Owner Esther Fomin

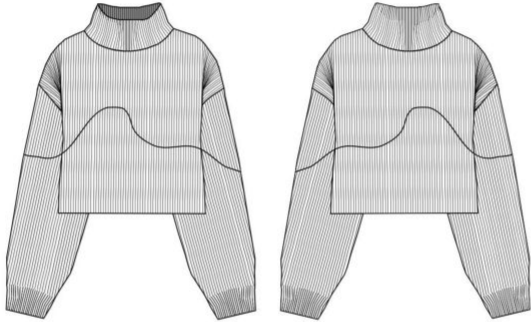
Style Info

Relaxed-fit, cropped sweater in ribbed cotton knit stretch. Double-layered turtleneck, dropped shoulders, long wide sleeves. Cotton content is recycled.

- Units: Inches
- Color Combo: GREEN, PURPLE, PINK, BLACK
- Sample Color: GREEN



Sweater - BW



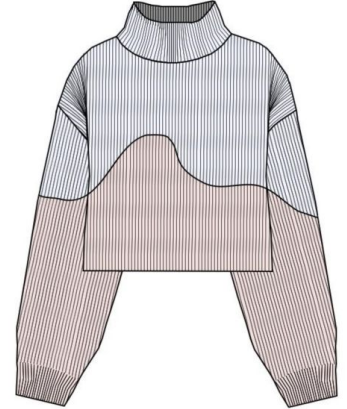
Sweater - Green



Sweater - Purple



Sweater - Pink



Sweater - Black



Product Development Cost Sheet

Date:	11/8/21	Fabric Type:	87% Cotton, 10% Rayon, 3% Spandex
Style:	#160029	Label:	Divided
Description:	Ribbed Knit Sweater	Country:	Bangladesh

Fabric	Yardage	Indiv. Cost	Cost
Main	2	\$1.99	\$3.98
Lining			
Total Fabric	2		\$3.98

Trim/Findings	Quantity	Indiv. Cost	Cost
Buttons			
Zippers			
Thread	64	0.00126	\$0.0831
Labels	1	\$0.34	\$0.34
Packing Materials	2	\$0.45	\$0.90
Total Trim			\$1.32

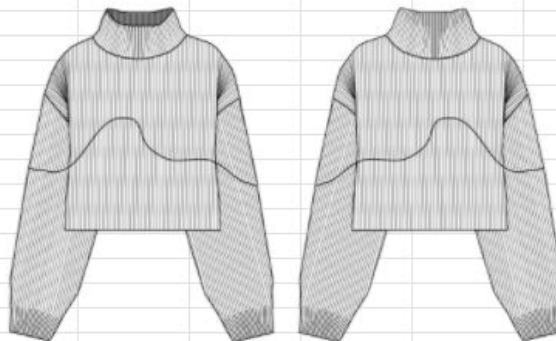
Labor (Country)	Cost per minute	Time	Cost
Labor 1: CMT	0.07	18	\$1.26
Labor 2: Finishing/Digital Print	0.07	1	\$0.07
Total Labor			\$1.33

Total First Cost			\$6.63
-------------------------	--	--	---------------

Miscellaneous	Rate	Cost
Agents Commission %	5%	\$0.33
Duty %	32.00%	\$2.12
Shipping	2550.00	\$0.13
Total Miscellaneous		\$2.58

Total Landed Cost			\$9.21
--------------------------	--	--	---------------

Wholesale	MU%	Cost
Wholesale Markup %		
Retail	MU%	MSRP
Retail Markup %	32%	\$28.80
Retail Selling Price		\$29.99





Page Index

- Summary P.1
- Sketches P.2 - P.2
- Materials P.3 - P.7
- Sizes P.8 - P.10

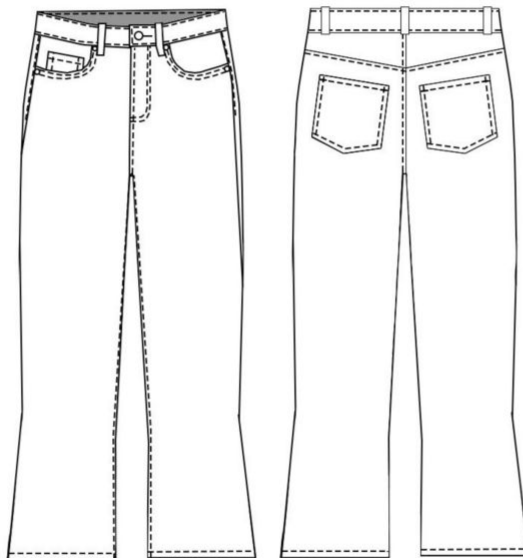
Members

- Owner Esther Fomin

Style Info

- 5-pocket, high-waisted, cropped, bootleg jeans in 100% cotton denim.
- Units: Inches
- Color Combo: DARK BLUE
- Sample Color: DARK BLUE

Jeans - BW



Jeans - Color



Product Development Cost Sheet

Date:	11/8/21	Fabric Type:	100% Cotton Denim
Style:	#10030	Label:	Divided
Description:	5-Pocket jeans	Country:	Bangladesh

Fabric	Yardage	Indiv. Cost	Cost
Main	2	\$2.09	\$4.18
Lining			
Total Fabric	2		\$4.18

Trim/Findings	Quantity	Indiv. Cost	Cost
Buttons	1	\$0.79	\$0.79
Zippers	1	0.015	\$0.02
Thread	168	0.00126	\$0.2180
Labels	1	\$0.34	\$0.34
Packing Materials	2	\$0.45	\$0.90
Total Trim			\$2.26



Labor (Country)	Cost per minute	Time	Cost
Labor 1: CMT	0.07	14	\$0.98
Labor 2: Finishing			
Total Labor			\$0.98

Total First Cost			\$7.42
-------------------------	--	--	---------------

Miscellaneous	Rate	Cost
Agents Commission %	5%	\$0.37
Duty %	16.60%	\$1.23
Shipping	2550.00	\$0.13
Total Miscellaneous		\$1.73

Total Landed Cost			\$9.15
--------------------------	--	--	---------------

Wholesale	MU%	Cost
Wholesale Markup %		
Retail	MU%	MSRP
Retail Markup %		32%
		\$28.61

Retail Selling Price			\$29.99
-----------------------------	--	--	----------------



Page Index

- Summary	P.1
- Sketches	P.2 - P.2
- Materials	P.3 - P.6
- Sizes	P.7 - P.9

Members

- Owner	Esther Fomin
---------	--------------

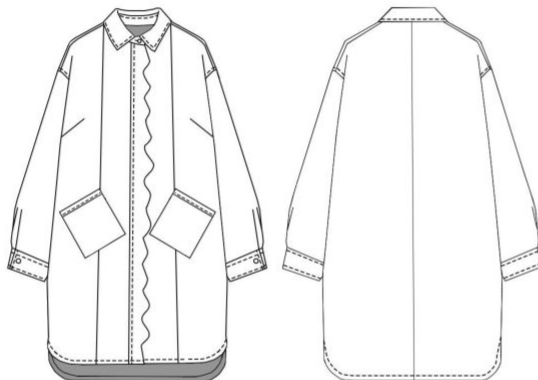
Style Info

Denim dress with collar, open pockets, concealed buttons full length of front, and dropped shoulders. Long sleeves with fitted cuff. Slits at sides, gently rounded hem, longer at back.

- Units: Inches
- Color Combo: DARK BLUE



Denim Dress - BW



Denim Dress - Color



Product Development Cost Sheet

Date:	11/8/21	Fabric Type:	100% Cotton Denim
Style:	#100418	Label:	Divided
Description:	2-Pocket Shirt Dress	Country:	Bangladesh

Fabric	Yardage	Indiv. Cost	Cost
Main		3	\$2.09
Lining			
Total Fabric		3	\$6.27

Trim/Findings	Quantity	Indiv. Cost	Cost
Buttons	7	\$0.79	\$5.53
Zippers			
Thread	168	0.00126	\$0.2180
Labels	1	\$0.34	\$0.34
Packing Materials	2	\$0.45	\$0.90
Total Trim			\$6.99

Labor (Country)	Cost per minute	Time	Cost
Labor 1: CMT	0.07	25	\$1.75
Labor 2: Finishing			
Total Labor			\$1.75

Total First Cost			\$15.01
-------------------------	--	--	----------------

Miscellaneous	Rate	Cost
Agents Commission %	5%	\$0.75
Duty %	8.40%	\$1.26
Shipping	2550.00	\$0.13
Total Miscellaneous		\$2.14

Total Landed Cost			\$17.15
--------------------------	--	--	----------------

Wholesale	MU%	Cost
Wholesale Markup %		
Retail	MU%	MSRP
Retail Markup %		32%
		\$53.58

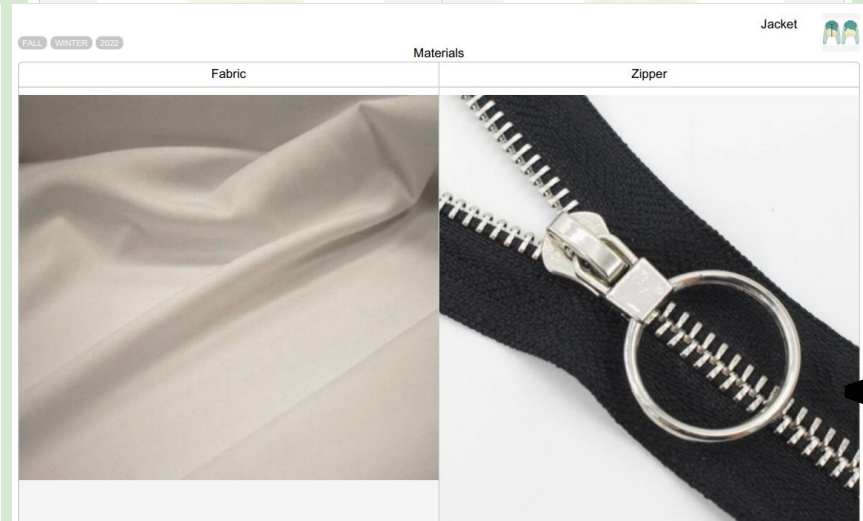
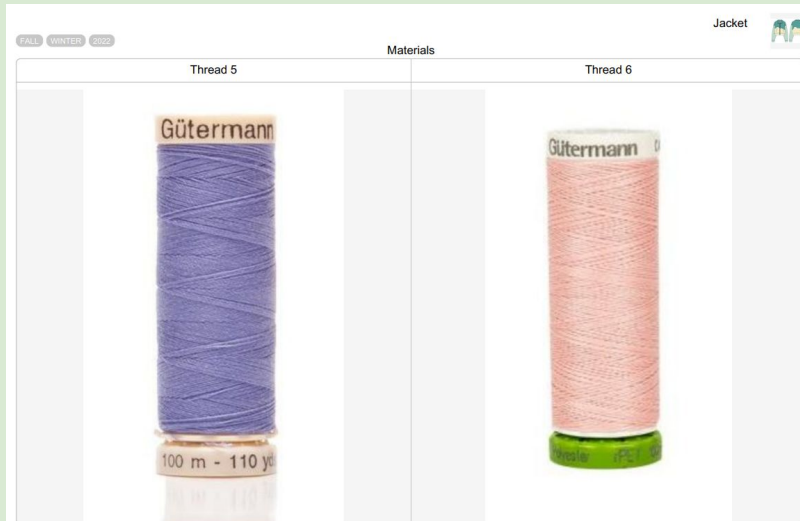
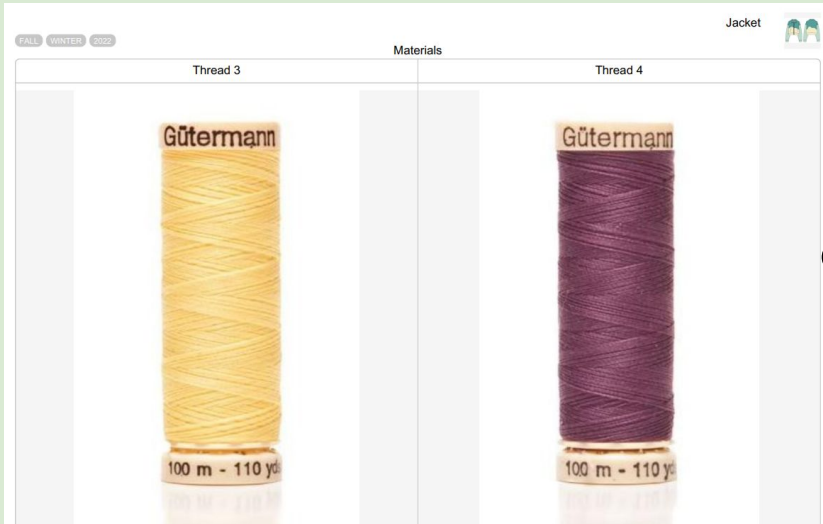
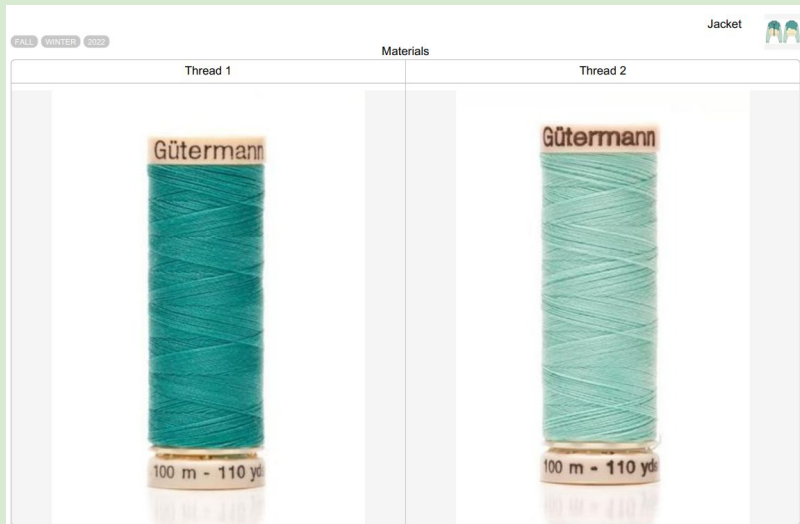
Retail Selling Price			\$54.99
-----------------------------	--	--	----------------





Appendix





Appendix

FALL WINTER 2022

Hang Tag



FALL WINTER 2022

Materials

Care Label



Main Label



Appendix

FALL WINTER 2022

(*) Sample size is highlighted in darker green

Measurements

All measurements are in inches

Description	TOL(+)	TOL(-)	XXS	XS	S	M	L	XL
Chest	0.25	0.25	29-30 ³ / ₄	30 ³ / ₄ -32 ¹ / ₄	32 ¹ / ₄ -35 ¹ / ₂	35 ¹ / ₂ -38 ¹ / ₂	38 ¹ / ₂ -42	42-46 ³ / ₄
Width	0.25	0.25	22 ³ / ₄ -24 ¹ / ₂	24 ¹ / ₂ -26	26-29	29-32 ¹ / ₂	32 ¹ / ₂ -36 ¹ / ₂	36 ¹ / ₂ -41 ¹ / ₄
Low Hip	0.25	0.25	32 ¹ / ₄ -33 ³ / ₄	33 ³ / ₄ -35 ¹ / ₂	35 ¹ / ₂ -38 ¹ / ₄	38 ¹ / ₄ -40 ³ / ₄	40 ³ / ₄ -43 ¹ / ₂	43 ¹ / ₂ -47 ¹ / ₂
Arm Length	0.25	0.25	23 ¹ / ₄	23 ¹ / ₂	23 ¹ / ₂	23 ³ / ₄	23 ³ / ₄ -24	24



FALL WINTER 2022

Materials

(*) Sample size is highlighted in darker green

DESCRIPTION	PLACEMENT	SUPPLIER	STATUS	*GREEN	PURPLE
 Thread 1 Bright Peacock 100m Gutermann 100% Polyester Thread	SEW COLLAR, DROPPED SHOULDER, ATTACH SLEEVES TO BODICE, TOP HALF OF BODICE, 1 INCH OFF TOP LEFT POCKET	Mood	To Place Order	yes	no
 Thread 2 Aqua 100m Gutermann 100% Polyester Thread	SEW SLEEVES AND CUFFS, ATTACH TO DROPPED SHOULDERS	Mood	To Place Order	yes	no
 Thread 3 Pastel Yellow 100m Gutermann 100% Polyester Thread	SEW BOTTOM HALF OF BODICE, WAISTBAND, POCKETS	Mood	To Place Order	yes	no
 Thread 4 Dark Purple 100m Gutermann 100% Polyester Thread	SEW COLLAR, DROPPED SHOULDER, ATTACH SLEEVES TO BODICE, TOP HALF OF BODICE, 1 INCH OFF TOP LEFT POCKET	Mood	To Place Order	no	yes
 Thread 5 Bright Lavender 100m Gutermann 100% Polyester Thread	SEW SLEEVES AND CUFFS, ATTACH TO DROPPED SHOULDERS	Mood	To Place Order	no	yes
 Thread 6 Petal Pink 100m Gutermann 100% Recycled Polyester Thread	SEW BOTTOM HALF OF BODICE, WAISTBAND, POCKETS	Mood	To Place Order	no	yes
 Fabric 100% Polyester Jersey Knit	PRINTED TO PANTONE COLOR, POCKETS, COLLAR, SLEEVES, CUFFS, WAISTBAND, ZIPPER	Morex	To Place Order	yes	yes
 Zipper Silver Metal Zipper with Circle Pull	SEW INTO CENTER FRONT ALL THE WAY UP TO COLLAR	Aliexpress	To Place Order	yes	yes
 Care Label Screen Printed Single sided satin	SEWN INTO LEFT SIDE SEAM 5" FROM BOTTOM	Dutch Label Shop	To Place Order	yes	yes
 Main Label Woven Brand Logo Label	ATTACHED INSIDE BACK TURTLENECK SEAM	Dutch Label Shop	To Place Order	yes	yes
 Hang Tag Screen Printed High Quality Bristol Board	TACKED ON WITH PLASTIC TAG ON SLEEVE	Dutch Label Shop	To Place Order	yes	yes

FALL WINTER 2022

Materials

Vest



Thread 1



Thread 2



FALL WINTER 2022

Materials

Vest



Thread 3



Thread 4



FALL WINTER 2022

Materials

Vest



Thread 5



Thread 6



FALL WINTER 2022

Materials

Vest



Thread 7



Fabric



Appendix

Materials

Rib Trim 1



Rib Trim 2



Rib Trim 3



Rib Trim 4



Rib Trim 5



Rib Trim 6



Rib Trim 7



Hang Tag



Materials

Care Label

EUR 158/164
 US 12-14Y
 CA 12-14A
 CN 160/80
 MX 158/164
 AUS 14-16
 Made in China
 CITY 786333
 PIR 023844 8

www.carecare.info
 OR USE MILD DETERGENT
 DRY FLUFF
 DRY WOOD
 CZ POUZÍTE JEVNÝ PRÁCI

Main Label



(*) Sample size is highlighted in darker green

Measurements

All measurements are in inches

Description	TOL(+)	TOL(-)	XXS	XS	S	M	L	XL
Chest	0.25	0.25	29-30 ¹ / ₄	30 ¹ / ₄ -32 ¹ / ₄	32 ¹ / ₄ -35 ¹ / ₂	35 ¹ / ₂ -38 ¹ / ₂	38 ¹ / ₂ -42	42-46 ¹ / ₄
Width	0.25	0.25	22 ³ / ₄ -24 ¹ / ₂	24 ¹ / ₂ -26	26-29	29-32 ¹ / ₂	32 ¹ / ₂ -36 ¹ / ₂	36 ¹ / ₂ -41 ¹ / ₄
Low Hip	0.25	0.25	32 ¹ / ₄ -33 ¹ / ₄	33 ¹ / ₄ -35 ¹ / ₂	35 ¹ / ₂ -38 ¹ / ₄	38 ¹ / ₄ -40 ¹ / ₄	40 ¹ / ₄ -43 ¹ / ₂	43 ¹ / ₂ -47 ¹ / ₂
Arm Length	0.25	0.25	23 ¹ / ₄	23 ¹ / ₂	23 ¹ / ₂	23 ³ / ₄	23 ³ / ₄ -24	24

IX

Vest



Materials

FALL WINTER 2022

(*) Sample size is highlighted in darker green

	Description	DESCRIPTION	PLACEMENT	SUPPLIER	STATUS	*PINK	BLACK	GREEN	PURPLE
	Thread 1	Petal Pink 100m Gutermann 100% Recycled Polyester Thread	SEW TRIM TO COLLAR AND ARMHOLES, TOP HALF OF BODICE	Mood	To Place Order	yes	no	no	no
	Thread 2	Black 100m Gutermann 100% Recycled Polyester Thread	SEW TRIM TO COLLAR AND ARMHOLES, TOP HALF OF BODICE	Mood	To Place Order	no	yes	no	no
	Thread 3	Nu White 100m Gutermann 100% Recycled Polyester Thread	SEW RIB TRIM TO WAIST, BOTTOM HALF OF BODICE	Mood	To Place Order	yes	yes	no	no
	Thread 4	Aqua 100m Gutermann 100% Polyester Thread	SEW TRIM TO COLLAR AND ARMHOLES, TOP HALF OF BODICE	Mood	To Place Order	no	no	yes	no
	Thread 5	Bright Peacock 100m Gutermann 100% Polyester Thread	SEW RIB TRIM TO WAIST, BOTTOM HALF OF BODICE	Mood	To Place Order	no	no	yes	no
	Thread 6	Bright Lavender 100m Gutermann 100% Polyester Thread	SEW TRIM TO COLLAR AND ARMHOLES, TOP HALF OF BODICE	Mood	To Place Order	no	no	no	yes
	Thread 7	Dark Purple 100m Gutermann 100% Polyester Thread	SEW RIB TRIM TO WAIST, BOTTOM HALF OF BODICE	Mood	To Place Order	no	no	no	yes
	Fabric	87% Polyester, 10% Rayon, 3% Spandex	PRINT TO PANTONE COLOR	Etsy	To Place Order	yes	yes	yes	yes









Vest



Materials

FALL WINTER 2022

(*) Sample size is highlighted in darker green

	Description	DESCRIPTION	PLACEMENT	SUPPLIER	STATUS	*PINK	BLACK	GREEN	PURPLE
	Rib Trim 1	Spandex/Cotton	SEW TO COLLAR AND ARMHOLES	Aliexpress	To Place Order	yes	no	no	no
	Rib Trim 2	Spandex/Cotton	SEW TO COLLAR AND ARMHOLES	Aliexpress	To Place Order	no	yes	no	no
	Rib Trim 3	Spandex/Cotton	SEW TO WAIST	Aliexpress	To Place Order	yes	yes	no	no
	Rib Trim 4	Spandex/Cotton	SEW TO COLLAR AND ARMHOLES	Aliexpress	To Place Order	no	no	yes	no
	Rib Trim 5	Spandex/Cotton	SEW TO WAIST	Aliexpress	To Place Order	no	no	yes	no
	Rib Trim 6	Spandex/Cotton	SEW TO COLLAR AND ARMHOLES	Aliexpress	To Place Order	no	no	no	yes
	Rib Trim 7	Spandex/Cotton	SEW TO WAIST	Aliexpress	To Place Order	no	no	no	yes
	Care Label	Screen Printed Single-sided satin	SEWN INTO LEFT SIDE SEAM 5" FROM BOTTOM	Dutch Label Shop	To Place Order	yes	yes	yes	yes
	Main Label	Woven Brand Logo Label	ATTACHED INSIDE BACK TURTLENECK SEAM	Dutch Label Shop	To Place Order	yes	yes	yes	yes
	Hang Tag	Screen Printed High Quality Bristol Board	TACKED ON WITH PLASTIC TAG ON SLEEVE	Dutch Label Shop	To Place Order	yes	yes	yes	yes

A



Materials

Thread 1



100 m - 110 yds

Thread 5



100 m - 110 yds

Thread 2



100 m - 110 yds

Thread 6



100 m - 110 yds

Thread 3



100 m - 110 yds

Thread 7



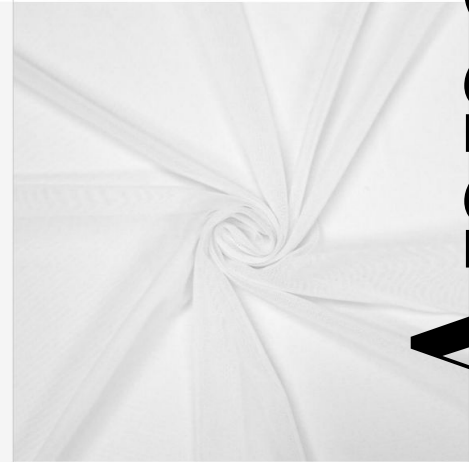
100 m - 110 yds

Thread 4



100 m - 110 yds

Fabric

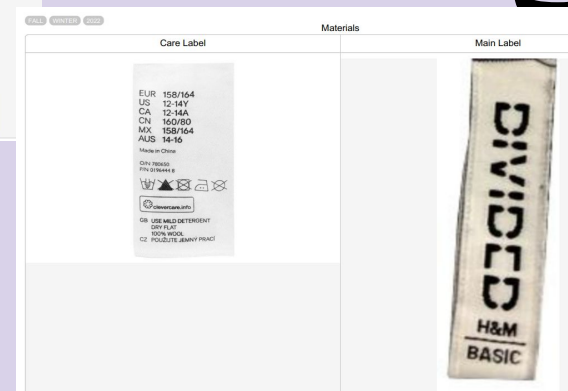
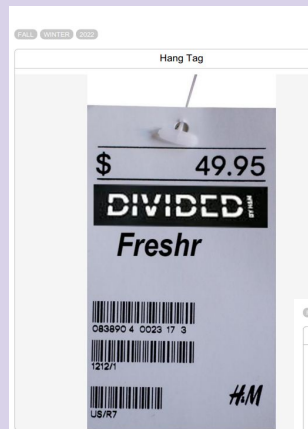


Appendix

Materials

(*) Sample size is highlighted in darker green

DESCRIPTION	PLACEMENT	SUPPLIER	STATUS	*PURPLE	GREEN
Thrad 1 Dark Purple 100m Gutermann 100% Polyester Thread	SEW WITH TURTLENECK, TOP HALF OF SLEEVES CONNECTED TO BODICE, TOP HALF OF BODICE WITH SEAM DETAILS IN CENTER, TOP LEFT, LEFT AND RIGHT SLEEVES	Mood	To Place Order	yes	no
Thrad 2 Bright Lavender 100m Gutermann 100% Polyester Thread	SEW WITH MIDDLE OF SHIRT, LEFT SLEEVE, RIGHT SLEEVE WITH SEAM DETAIL, SEAM DETAIL ON RIGHT SIDE OF BODICE AND CENTER FRONT	Mood	To Place Order	yes	no
Thrad 3 Nu White 100m Gutermann 100% Recycled Polyester Thread	SEW WITH BOTTOM MIDDLE HALF OF SHIRT, SEAM DETAIL ON CENTER FRONT	Mood	To Place Order	yes	yes
Thrad 4 Petal Pink 100m Gutermann 100% Recycled Polyester Thread	SEW WITH BOTTOM OF SHIRT AND SLEEVES, SEAM DETAIL ON CENTER FRONT	Mood	To Place Order	yes	no
Thrad 5 Bright Peacock 100m Gutermann 100% Polyester Thread	SEW WITH TURTLENECK, TOP HALF OF SLEEVES CONNECTED TO BODICE, TOP HALF OF BODICE WITH SEAM DETAILS IN CENTER, TOP LEFT, LEFT AND RIGHT SLEEVES	Mood	To Place Order	no	yes
Thrad 6 Aqua 100m Gutermann 100% Polyester Thread	SEW WITH MIDDLE OF SHIRT, LEFT SLEEVE, RIGHT SLEEVE WITH SEAM DETAIL, SEAM DETAIL ON RIGHT SIDE OF BODICE AND CENTER FRONT	Mood	To Place Order	no	yes
Thrad 7 Pastel Yellow 100m Gutermann 100% Polyester Thread	SEW WITH BOTTOM OF SHIRT AND SLEEVES, SEAM DETAIL ON CENTER FRONT	Mood	To Place Order	no	yes
Fabric 92% Polyester, 8% Spandex	PRINT TO PANTONE COLORS	Etsy	To Place Order	yes	yes
Care Label Screen Printed Single sided satin	SEWN INTO LEFT SIDE SEAM 5" FROM BOTTOM	Dutch Label Shop	To Place Order	yes	yes
Main Label Woven Brand Logo Label	ATTACHED INSIDE BACK TURTLENECK SEAM	Dutch Label Shop	To Place Order	yes	yes
Hang Tag Screen Printed High Quality Bristol Board	TACKED ON WITH PLASTIC TAG ON SLEEVE	Dutch Label Shop	To Place Order	yes	yes



Measurements

(*) Sample size is highlighted in darker green

All measurements are in inches

Description	TOL(+)	TOL(-)	XXS	XS	S	M	L	XL
Chest	0.25	0.25	29-30 $\frac{1}{4}$	30 $\frac{1}{4}$ -32 $\frac{1}{4}$	32 $\frac{1}{4}$ -35 $\frac{1}{2}$	35 $\frac{1}{2}$ -38 $\frac{1}{2}$	38 $\frac{1}{2}$ -42	42-46 $\frac{1}{2}$
Width	0.25	0.25	22 $\frac{3}{4}$ -24 $\frac{1}{2}$	24 $\frac{1}{2}$ -26	26-29	29-32 $\frac{1}{2}$	32 $\frac{1}{2}$ -36 $\frac{1}{2}$	36 $\frac{1}{2}$ -41 $\frac{1}{4}$
Low Hip	0.25	0.25	32 $\frac{1}{4}$ -33 $\frac{3}{4}$	33 $\frac{3}{4}$ -35 $\frac{1}{2}$	35 $\frac{1}{2}$ -38 $\frac{1}{4}$	38 $\frac{1}{4}$ -40 $\frac{1}{4}$	40 $\frac{1}{4}$ -43 $\frac{1}{2}$	43 $\frac{1}{2}$ -47 $\frac{1}{2}$
Arm Length	0.25	0.25	23 $\frac{1}{4}$	23 $\frac{1}{2}$	23 $\frac{3}{4}$	23 $\frac{3}{4}$	23 $\frac{3}{4}$ -24	24

Divided



Stage: Sampling

FALL WINTER 2022

Dress Pants



Thread 1

Materials

Thread 2



Zipper 1

Zipper 2



Stage: Sampling

FALL WINTER 2022

Dress Pants



Materials

Fabric 1

Fabric 2



Clasp



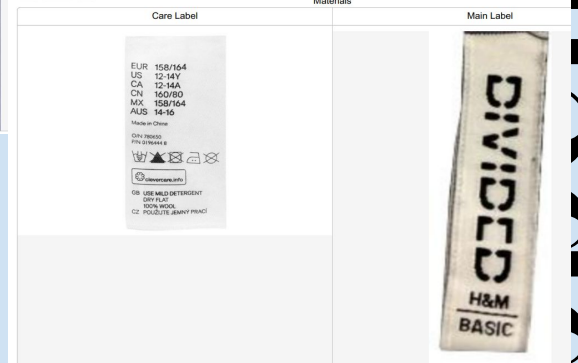
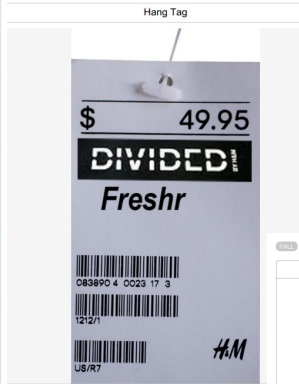
Appendix



Materials

(*) Sample size is highlighted in darker green.

DESCRIPTION	PLACEMENT	SUPPLIER	STATUS	*BEIGE	BLACK	PURPLE	GREEN
 Thread 1 Cafe Beige 100m Gutermann 100% Polyester Thread	SEW SIDE POCKETS, SIDE SEAMS, INSEAMS, WAIST, SEAM DETAILS ON PANTS, HEM, HIDDEN ZIPPER FLY, CLASPS AT TOP OF ZIPPER	Mood	To Place Order	yes	no		
 Thread 2 Black 100m Gutermann 100% Recycled Polyester Thread	SEW SIDE POCKETS, SIDE SEAMS, INSEAMS, WAIST, SEAM DETAILS ON PANTS, HEM, HIDDEN ZIPPER FLY, CLASPS AT TOP OF ZIPPER	Mood	To Place Order	no	yes		
 Fabric 1 Beige 100% Polyester Interlock Knit Fabric	PRINT TO PANTONE COLOR	BigZFabric	To Place Order	yes	no		
 Fabric 2 Black 100% Polyester Interlock Knit Fabric	2 FRONT POCKETS, 4 FRONT PANELS, 2 BACK PANELS	BigZFabric	To Place Order	no	yes		
 Zipper 1 7" Beige Zipper	HIDDEN ZIPPER FLY BEHIND CENTER FRONT	Alibaba	To Place Order	yes	no		
 Zipper 2 7" Black Zipper	HIDDEN ZIPPER FLY BEHIND CENTER FRONT	Alibaba	To Place Order	no	yes		
 Clasp Silver Metal Clasp	HIDDEN CLASP AT TOP OF ZIPPER	Aliexpress	To Place Order	yes	yes		
 Care Label Screen Printed Single sided satin	SEWN INTO LEFT SIDE SEAM 5" FROM BOTTOM	Dutch Label Shop	To Place Order			yes	yes
 Main Label Woven Brand Logo Label	ATTACHED INSIDE BACK TURTLENECK SEAM	Dutch Label Shop	To Place Order			yes	yes
 Hang Tag Screen Printed High Quality Bristol Board	TACKED ON WITH PLASTIC TAG ON SLEEVE	Dutch Label Shop	To Place Order			yes	yes



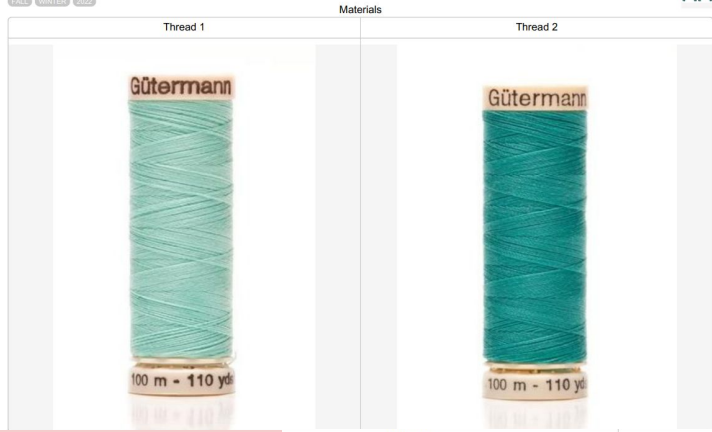
oix

(*) Sample size is highlighted in darker green

Measurements

All measurements are in inches











Description	TOL(+)	TOL(-)	XXS	XS	S	M	L	XL
Chest	0.25	0.25	29-30 $\frac{3}{4}$	30 $\frac{3}{4}$ -32 $\frac{1}{4}$	32 $\frac{1}{4}$ -35 $\frac{1}{2}$	35 $\frac{1}{2}$ -38 $\frac{1}{2}$	38 $\frac{1}{2}$ -42	42-46 $\frac{3}{4}$
Width	0.25	0.25	22 $\frac{3}{4}$ -24 $\frac{1}{2}$	24 $\frac{1}{2}$ -26	26-29	29-32 $\frac{1}{2}$	32 $\frac{1}{2}$ -36 $\frac{1}{2}$	36 $\frac{1}{2}$ -41 $\frac{1}{4}$
Low Hip	0.25	0.25	32 $\frac{1}{4}$ -33 $\frac{3}{4}$	33 $\frac{3}{4}$ -35 $\frac{1}{2}$	35 $\frac{1}{2}$ -38 $\frac{1}{4}$	38 $\frac{1}{4}$ -40 $\frac{3}{4}$	40 $\frac{3}{4}$ -43 $\frac{1}{2}$	43 $\frac{1}{2}$ -47 $\frac{1}{2}$
Arm Length	0.25	0.25	23 $\frac{1}{4}$	23 $\frac{1}{2}$	23 $\frac{3}{4}$	23 $\frac{3}{4}$	23 $\frac{3}{4}$ -24	24



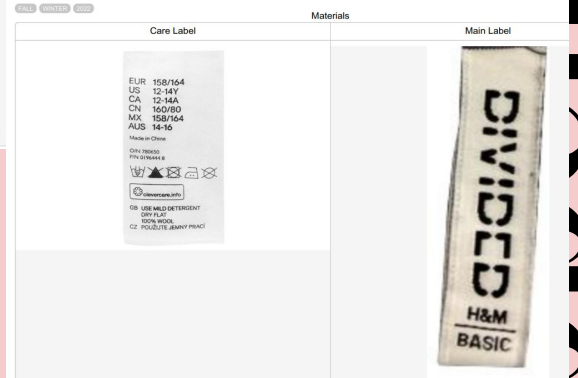
Appendix



(*) Sample size is highlighted in darker green

		Materials							
DESCRIPTION	DESCRIPTION	PLACEMENT	SUPPLIER	STATUS	*GREEN	PURPLE	PINK	BLACK	
	Thread 1 Aqua 100m Gutermann 100% Polyester Thread	SEW TURTLENECK TO BODICE, TOP HALF OF SLEEVES SEWN ONTO BODICE	Mood	To Place Order	yes	no	no	no	
	Thread 2 Bright Peacock 100m Gutermann 100% Polyester Thread	SEW KNIT CUFFS, BOTTOM HALF OF BODICE AND SLEEVES	Mood	To Place Order	yes	no	no	no	
	Thread 3 Bright Lavender 100m Gutermann 100% Polyester Thread	SEW TURTLENECK TO BODICE, TOP HALF OF SLEEVES SEWN ONTO BODICE	Mood	To Place Order	no	yes	no	no	
	Thread 4 Dark Purple 100m Gutermann 100% Polyester Thread	SEW KNIT CUFFS, BOTTOM HALF OF BODICE AND SLEEVES	Mood	To Place Order	no	yes	no	no	
	Thread 5 Petal Pink 100m Gutermann 100% Recycled Polyester Thread	SEW KNIT CUFFS, BOTTOM HALF OF BODICE AND SLEEVES	Mood	To Place Order	no	no	yes	no	
	Thread 6 Black 100m Gutermann 100% Recycled Polyester Thread	SEW KNIT CUFFS, BOTTOM HALF OF BODICE AND SLEEVES	Mood	To Place Order	no	no	no	yes	
	Fabric 87% Cotton, 10% Rayon, 3% Spandex	PRINT TO PANTONE COLOR	Etsy	To Place Order	yes	yes	yes	yes	
	Care Label Screen Printed Single sided satin	SEWN INTO LEFT SIDE SEAM 5" FROM BOTTOM	Dutch Label Shop	To Place Order	yes	yes			
	Main Label Woven Brand Logo Label	ATTACHED INSIDE BACK TURTLENECK SEAM	Dutch Label Shop	To Place Order	yes	yes			
	Hang Tag Screen Printed High Quality Bristol Board	TACKED ON WITH PLASTIC TAG ON SLEEVE	Dutch Label Shop	To Place Order	yes	yes			

Hang Tag



(*) Sample size is highlighted in darker green

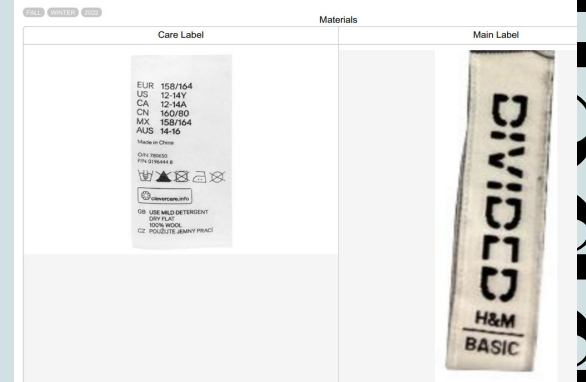
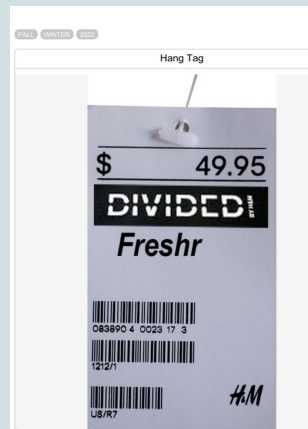
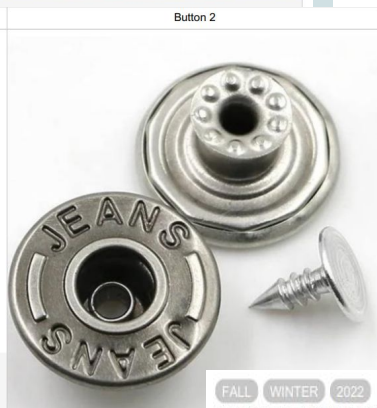
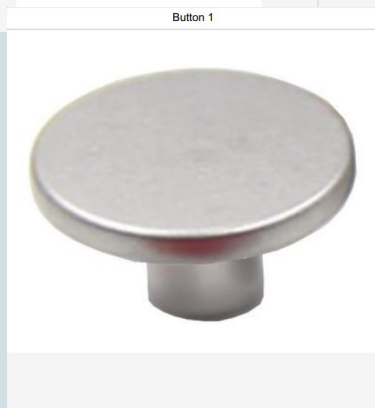
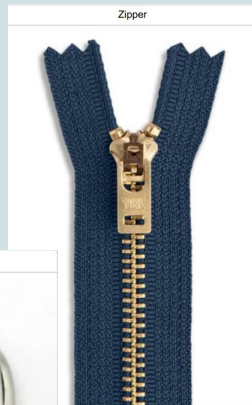
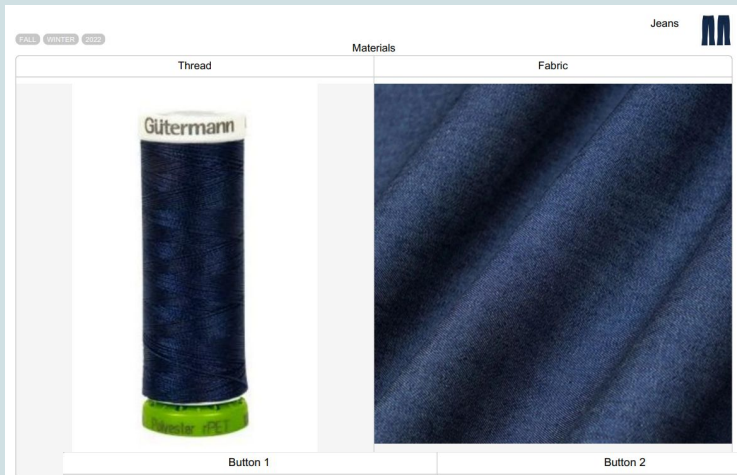
Measurements

All measurements are in inches

Description	TOL(+)	TOL(-)	XXS	XS	S	M	L	XL
Chest	0.25	0.25	29-30¼	30¼-32¼	32¼-35½	35½-38½	38½-42	42-46¾
Width	0.25	0.25	22¾-24½	24½-26	26-29	29-32½	32½-36½	36½-41¼
Low Hip	0.25	0.25	32¼-33¾	33¾-35½	35½-38¼	38¼-40¼	40¼-43½	43½-47½
Arm Length	0.25	0.25	23¼	23½	23½	23¾	23¾-24	24

olix





FALL WINTER 2022

(*) Sample size is highlighted in darker green

Measurements

All measurements are in inches

Description	TOL(+)	TOL(-)	XXS	XS	S	M	L	XL
Chest	0.25	0.25	29-30 $\frac{1}{4}$	30 $\frac{1}{4}$ -32 $\frac{1}{4}$	32 $\frac{1}{2}$ -35 $\frac{1}{2}$	35 $\frac{1}{2}$ -38 $\frac{1}{2}$	38 $\frac{1}{2}$ -42	42-46 $\frac{3}{4}$
Width	0.25	0.25	22 $\frac{3}{4}$ -24 $\frac{1}{2}$	24 $\frac{1}{2}$ -26	26-29	29-32 $\frac{1}{2}$	32 $\frac{1}{2}$ -36 $\frac{1}{2}$	36 $\frac{1}{2}$ -41 $\frac{1}{4}$
Low Hip	0.25	0.25	32 $\frac{1}{4}$ -33 $\frac{3}{4}$	33 $\frac{3}{4}$ -35 $\frac{1}{2}$	35 $\frac{1}{2}$ -38 $\frac{1}{4}$	38 $\frac{1}{4}$ -40 $\frac{3}{4}$	40 $\frac{3}{4}$ -43 $\frac{1}{2}$	43 $\frac{1}{2}$ -47 $\frac{1}{2}$
Arm Length	0.25	0.25	23 $\frac{1}{4}$	23 $\frac{1}{2}$	23 $\frac{3}{2}$	23 $\frac{3}{4}$	23 $\frac{3}{4}$ -24	24

diviX



FALL WINTER 2022

(*) Sample size is highlighted in darker green

Materials

	Description	DESCRIPTION	PLACEMENT	SUPPLIER	STATUS	*DARK BLUE
	Thread	Navy 100m Gutermann 100% Recycled Polyester Thread	SEW 5 POCKETS ON JEAN, ZIP FLY, 5 BELT LOOPS, OUTER SEAMS, INSEAM, HEM, WAIST, BACK YOKE	Mood	To Be Placed	yes
	Fabric	100% Cotton Denim	3 POCKETS IN FRONT, 2 POCKETS IN BACK, 2 BELT LOOPS IN FRONT, 3 BELT LOOPS IN BACK, ZIP FLY, 2 FRONT PANELS, 2 BACK PANELS	Aliexpress	To Be Placed	yes
	Button 1	Silver Metal Regular Button	1 BUTTON AT TOP OF ZIPPER ON CENTER FRONT	Alibaba	To Be Placed	yes
	Button 2	Silver Metal Rivets	4 TRIM BUTTONS ON BOTH ENDS OF FRONT POCKETS	Alibaba	To Be Placed	yes
	Zipper	7" Zipper	SEW INTO ZIP FLY AT CENTER FRONT	Alibaba	To Be Placed	yes
	Care Label	Screen Printed Single sided satin	SEWN INTO LEFT SIDE SEAM 5" FROM BOTTOM	Dutch Label Shop	To Place Order	yes
	Main Label	Woven Brand Logo Label	ATTACHED INSIDE BACK TURTLENECK SEAM	Dutch Label Shop	To Place Order	yes
	Hang Tag	Screen Printed High Quality Bristol Board	TACKED ON WITH PLASTIC TAG ON SLEEVE	Dutch Label Shop	To Place Order	yes

FALL WINTER 2022

Dress

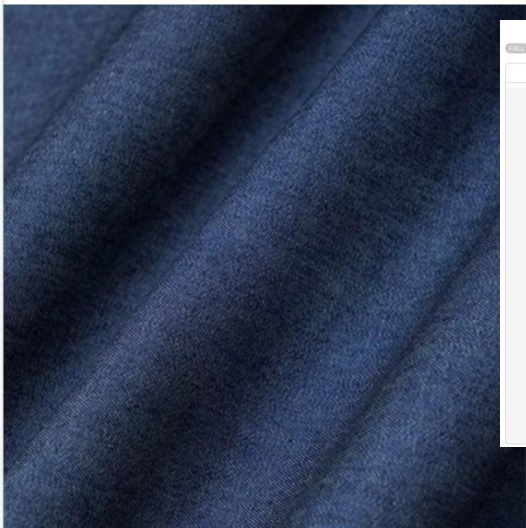


Materials

Thread



Fabric



FALL WINTER 2022

Hang Tag



FALL WINTER 2022

Care Label

Materials

Main Label



Buttons



FALL WINTER 2022

(*) Sample size is highlighted in darker green

Measurements

All measurements are in inches

Description	TOL(+)	TOL(-)	XXS	XS	S	M	L	XL
Chest	0.25	0.25	29-30 ³ / ₄	30 ³ / ₄ -32 ¹ / ₄	32 ¹ / ₄ -35 ¹ / ₂	35 ¹ / ₂ -38 ¹ / ₂	38 ¹ / ₂ -42	42-46 ³ / ₄
Width	0.25	0.25	22 ³ / ₄ -24 ¹ / ₂	24 ¹ / ₂ -26	26-29	29-32 ¹ / ₂	32 ¹ / ₂ -36 ¹ / ₂	36 ¹ / ₂ -41 ¹ / ₄
Low Hip	0.25	0.25	32 ¹ / ₄ -33 ³ / ₄	33 ³ / ₄ -35 ¹ / ₂	35 ¹ / ₂ -38 ¹ / ₄	38 ¹ / ₄ -40 ³ / ₄	40 ³ / ₄ -43 ¹ / ₂	43 ¹ / ₂ -47 ¹ / ₂
Arm Length	0.25	0.25	23 ¹ / ₄	23 ¹ / ₂	23 ¹ / ₂	23 ³ / ₄	23 ³ / ₄ -24	24

dix









Dress



FALL WINTER 2022

(*) Sample size is highlighted in darker green

Materials

	Desc ription	DESCRIPTION	PLACEMENT	SUPPL IER	STAT US	DARK BLUE
	Thread	Navy 100m Gutermann 100% Recycled Polyester Thread	SEW POCKETS, COLLAR WITH SEAM INSIDE BACK, 4 FRONT PANELS, DROPPED SHOULDER PUFF SLEEVES WITH BUTTONS AT SIDE FRONT, 2 BACK PANELS, SHOULDER SEAM	Mood	To Be Place d	yes
	Fabric	100% Cotton Denim	POCKETS, COLLAR WITH BUTTON, DROPPED SHOULDER PUFF SLEEVES WITH BUTTON, 4 FRONT PANELS, 2 BACK PANELS, FRONT FLAP OVER HIDDEN BUTTONS DOWN CENTER FRONT	Aliexpr ess	To Be Place d	yes
	Buttons	7 Metal Buttons	ONE ON EACH CUFF, ONE TO CLOSE COLLAR, 5 DOWN CENTER FRONT	Alibaba	To Place Order	yes
	Care Label	Screen Printed Single sided satin	SEWN INTO LEFT SIDE SEAM 5" FROM BOTTOM	Dutch Label Shop	To Place Order	yes
	Main Label	Woven Brand Logo Label	ATTACHED INSIDE BACK TURTLENECK SEAM	Dutch Label Shop	To Place Order	yes
	Hang Tag	Screen Printed High Quality Bristol Board	TACKED ON WITH PLASTIC TAG ON SLEEVE	Dutch Label Shop	To Place Order	yes

Appendix

Sources

- <https://documart.com/all-about-digital-printing/>
- <https://www.textiletoday.com.bd/all-over-printing-vs-all-over-digital-printing/>